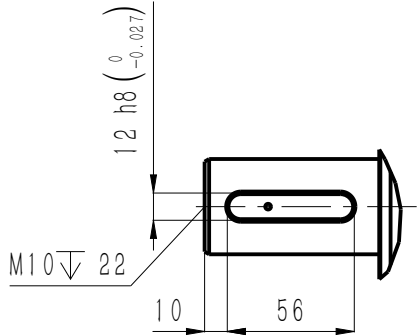


版本 Edition	变更内容 Description of the change

正样
2026.03.09
A



标配: A型圆头普通平键
A12X8X56(GB/T1096)

抱闸参数 Brake parameters

额定电压 Rated voltage	24	V DC
额定功率 Rated power	55	W
电阻(20℃) Resistance	10.5±7%	Ω
额定扭矩 Rated torque	≥150	N·m
释放电压 Release voltage	≥1.2	V
吸引电压 Pickup voltage	≤18	V
吸合时间 Pickup time	≤350	ms
释放时间 Release time	≤80	ms
回转间隙 Rotational Clearance	≤1° (20%额定扭矩) (20% Rated torque)	

电机技术参数 Motor parameters

额定电压 Rated voltage	380	V AC
额定功率 Rated power	7.1	kW
额定扭矩 Rated torque	40	N·m
额定电流 Rated current	13.3	Arms
峰值扭矩(850rpm) Peak torque	100	N·m
峰值电流(850rpm) Peak current	34.6	Arms
峰值扭矩(1700rpm) Peak torque	75	N·m
峰值电流(1700rpm) Peak current	30.5	Arms
峰值扭矩(2700rpm) Peak torque	43	N·m
峰值电流(2700rpm) Peak current	25.1	Arms
额定转速 Rated speed	1700	rpm
峰值转速 Maximum speed	2700	rpm
扭矩系数 Torque constant	3.05	N·m/Arms
反电势常数 Back EMF constant	199.9	V/krpm
线电阻 line resistance	1.58	Ω
线电感 line inductance	23.2	mH
转动惯量 Moment of inertia	64±10%	kg·cm ²
轴向允许载荷 Axial allowable load	/	N
径向允许载荷 Radial allowable load	/	N
极对数 Number of pole pairs	4	对

引线定义 Wiring definition

